



MINIATURE PRESSURE REGULATORS

Materials: brass body, Buna-N seals, stainless steel stem & spring

MAR Series Design Features

- Self-relieving type; permits pressure to be adjusted downward as well as up; eliminates creepage of down-stream pressure; holds pressure constant
- Knurled brass or plastic micro-adjustment knob, with 40 pitch threads on adjustment screw, permits smooth, easy pressure selection without use of tools
- Convenient to use with wide range of Clippard fittings, valves, and cylinders MAR-1P has standard 1/8 NPT inlet; MAR-1 has 10-32; both have 10-32 outlets
- Panel mounting permits unit to be located with other controls on a control console or panel board for pilot operation of larger regulators or for remote control; mounting nuts and lockwashers furnished
- Small, compact - ideal for mounting on individual jigs and fixtures as well as in control circuits
- Delivery pressure range of 0 - 100 psi. Max. supply pressure 150 psi.
- NON-RELIEVING TYPE REGULATORS ARE AVAILABLE

Pressure Range Options for MAR Series

Model Number	MAR-1-1	MAR-1-2	MAR-1-3	MAR-1-4	MAR-1-5	MAR-1-6	MAR-1-7	MAR-1
Pressure Range	0-10 psi	0-20 psi	0-30 psi	0-40 psi	0-50 psi	0-60 psi	0-70 psi	0-100 psi

MAR-1

Adjustable self-relieving pressure regulator



Medium: air

Input Pressure: input - 150 psig max.
output - 100 psig max.

Air Flow: @50 psig - 3 SCFM
@100 psig - 5 SCFM

Mounting: 15/32-32 thread
Nut and lockwashers furnished

Ports: Inlet - 10-32, Outlet - 10-32

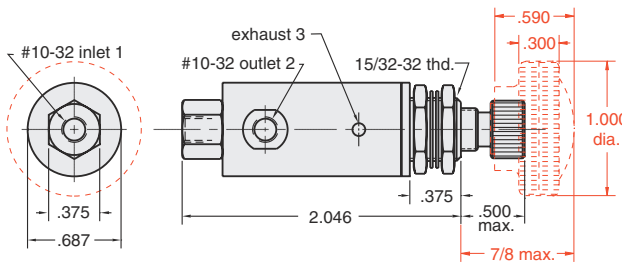
Exhaust: To atmosphere through hole

Adjustment: By means of knurled knob with micro-adjustment (40 pitch thd.); pressure may be adjusted

Temperature Range: 32° to 230° F



MAR-1-K



Adjustable self relieving pressure regulator with plastic knob
dimensions in red

MAR-1NR Adjustable non-relieving pressure regulator

MAR-1NR-K Adjustable non-relieving pressure regulator with plastic knob dimensions in red

MAR-1P

Adjustable self-relieving pressure regulator



Medium: air

Input Pressure: input - 150 psig max.
output - 100 psig max.

Air Flow: @50 psig - 3 SCFM
@100 psig - 5 SCFM

Mounting: 15/32-32 thread
Nut and lockwashers furnished

Ports: Inlet - 1/8 NPT, Outlet - 10-32

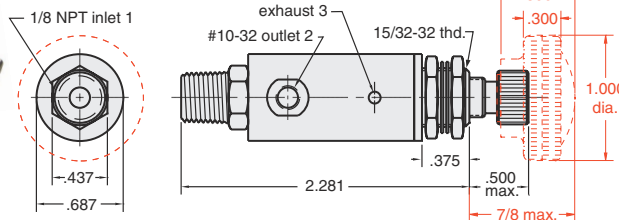
Exhaust: To atmosphere through hole

Adjustment: By means of knurled knob with micro-adjustment (40 pitch thd.); pressure may be adjusted

Temperature Range: 32° to 230° F



MAR-1P-K



Adjustable self relieving pressure regulator with plastic knob
dimensions in red

MAR-1PNR Adjustable non-relieving pressure regulator

MAR-1PNR-K Adjustable non-relieving pressure regulator with plastic knob dimensions in red

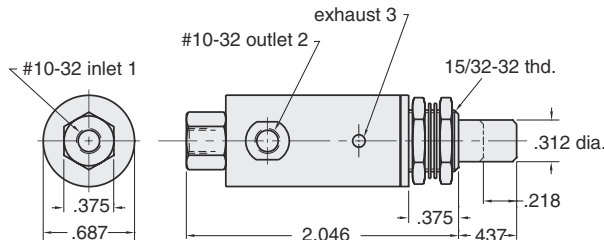
MINIATURE PRESSURE REGULATORS



Materials: brass body, Buna-N seals, stainless steel stem & spring

MAR-1C

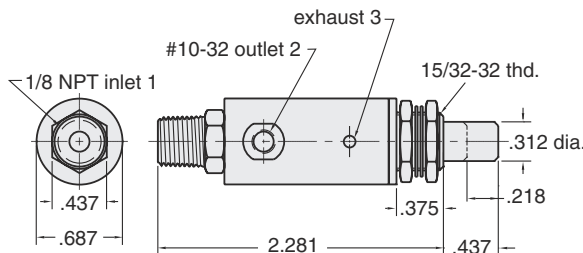
Normally closed 3-way piston type valve with variable pressure output



Medium: air
Plunger Travel: 7/32"
Input Pressure: input - 150 psig max.
 output - 100 psig max.
Air Flow: @50 psig - 3 SCFM
 @100 psig - 5 SCFM
Force For Full Stem Travel: 25 lb nominal
Mounting: 15/32-32 thread
 Nut and lockwashers furnished
Ports: Inlet - 10-32, Outlet - 10-32
Exhaust: To atmosphere through body hole
Temperature Range: 32° to 230° F
Operation: As plunger is depressed pressure increases proportionally to the travel; when plunger is released the input is closed and the output pressure is exhausted to atmosphere

MAR-1CP

Normally closed 3-way piston type valve with variable pressure output



Medium: air
Plunger Travel: 7/32"
Input Pressure: input - 150 psig max.
 output - 100 psig max.
Air Flow: @50 psig - 3 SCFM
 @100 psig - 5 SCFM
Force For Full Stem Travel: 25 lb nominal
Mounting: 15/32-32 thread
 Nut and lockwashers furnished
Ports: Inlet - 1/8 NPT, Outlet - 10-32
Exhaust: To atmosphere through body hole
Temperature Range: 32° to 230° F
Operation: As plunger is depressed pressure increases proportionally to the travel; when plunger is released the input is closed and the output pressure is exhausted to atmosphere

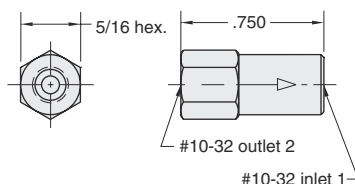
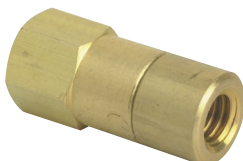
CHECK VALVES

Three varieties of check valves are offered by Clippard. Each permits flow in one direction only. All have bright-dipped brass bodies that provide in-line mounting, Buna-N seals and stainless steel springs as standard. The MCV-2 has 10-32 ports and a "duckbill" seal. The MCV-1 series has 10-32 ports and a brass poppet. The MJCV-1 series has 1/8 NPT ports and a Delrin® poppet.



MCV-2

Miniature check valve "duckbill" type, permits flow in one direction only, low cracking pressure



Medium: air
Input Pressure: 100 psig max.
Air Flow: @50 psig - 1 SCFM
Pressure To Crack: 1 psi
Pressure To Fully Open: 2.5
Mounting: direct or inline
Ports: Inlet - 10-32, Outlet - 10-32
Flow Direction: Arrow on valve body indicates direction of flow
Temperature Range: 32° to 230° F
Note: Not intended for pressure relief